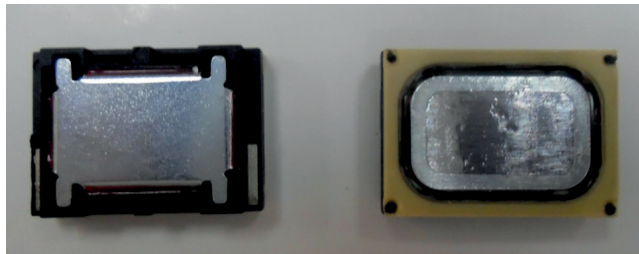
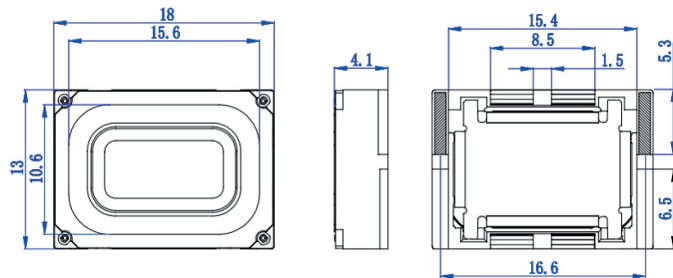


### CHARACTERISTICS

Impedance [ $\Omega$ ]	7.6 $\pm$ 15% at 2 kHz
SPL [dB rel 20 $\mu$ Pa]	111.5 $\pm$ 3 dB at 2 kHz to 5 kHz (average), 2.0 V/1.0cm in 1cc back cavity.
Resonance Frequency [Hz]	800Hz $\pm$ 20% in 1.0cc back cavity at 2.0 V
Total Harmonic Distortion [%]	Upper limit for THD shown in graph.
Input Power (nom./max) [W]	0.7W / 1.0W in 1cc back cavity.
Termination*	Leaf spring

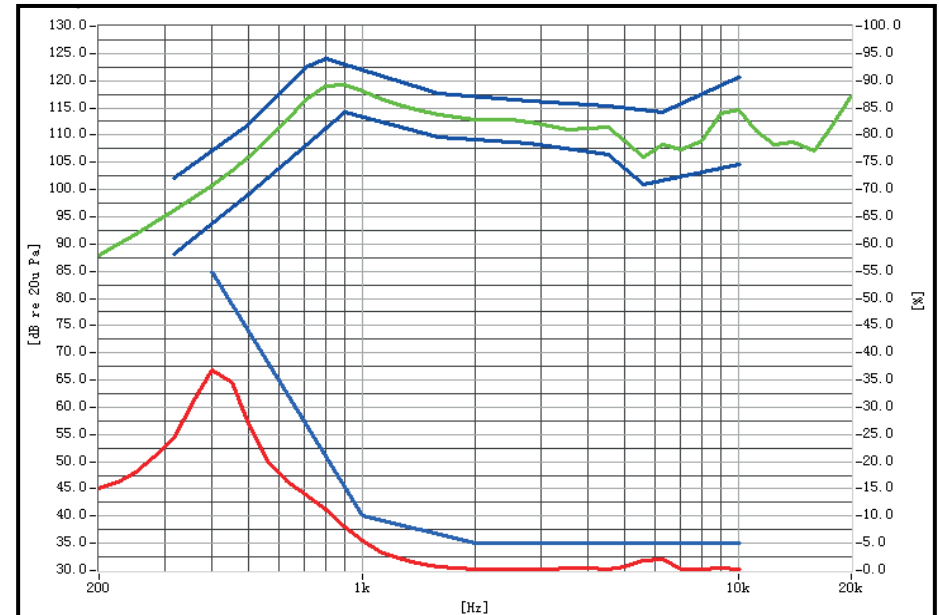
\*For other termination options please contact sales@owolff.com or your local Ole Wolff representative.

### PHYSICAL DIMENSIONS [mm]



### GRAPHS

Tested in 1.0cc / 2 Vrms/1cm



#### F&R Mask:

F.Point	315	500	710	800	900	1.6k	3.55k	4.5k	5.6k	6.3k	10k	Hz
Upper Limit	+6	+6	+5	+5	-	+4	+4	+4	-	+6	+6	dB
Lower Limit	-8	-7	-	-	-5	-4	-4	-5	-5	-	-10	dB

#### THD Mask:

F.POINT	400	1000	2000	10000	HZ
UPPER LIMITS	55	10	5	5	%