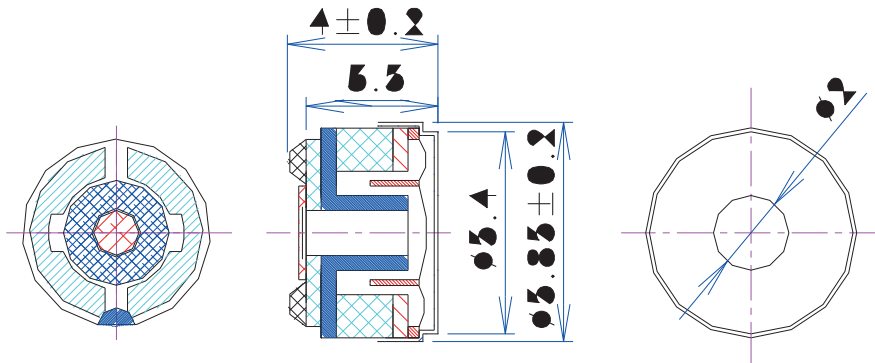


CHARACTERISTICS

Impedance [Ω]	13 \pm 15%
SPL [dB rel 20 μ Pa]	95.9 dB \pm 3 dB @ 1 kHz / 1 mW / 2cc
Resonance Frequency [Hz]	3100Hz \pm 15%
Total Harmonic Distortion [%]	As shown in graph
Input Power (nom./max) [mW]	5 / 10
Termination*	Terminals

*For other termination options please contact sales@owolff.com or your local Ole Wolff representative.

PHYSICAL DIMENSIONS [mm]



GRAPHS

