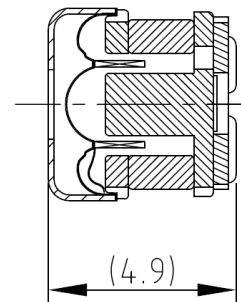
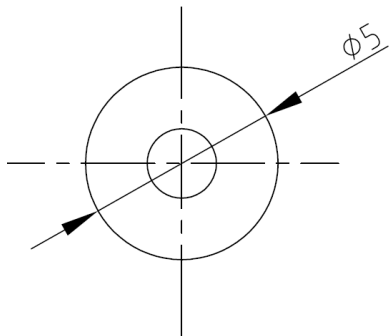


CHARACTERISTICS

Impedance [Ω]	50 Ω \pm 15% (@ 5kHz)
SPL [dB rel 20 μ Pa]	103 \pm 3 dB (@ 1kHz/1mW/2cc coupler)
Resonance Frequency [Hz]	1800 Hz \pm 15% (@1mW)
Total Harmonic Distortion [%]	As shown in graph
Input Power (nom./max) [mW]	5 / 10
Termination*	Terminals

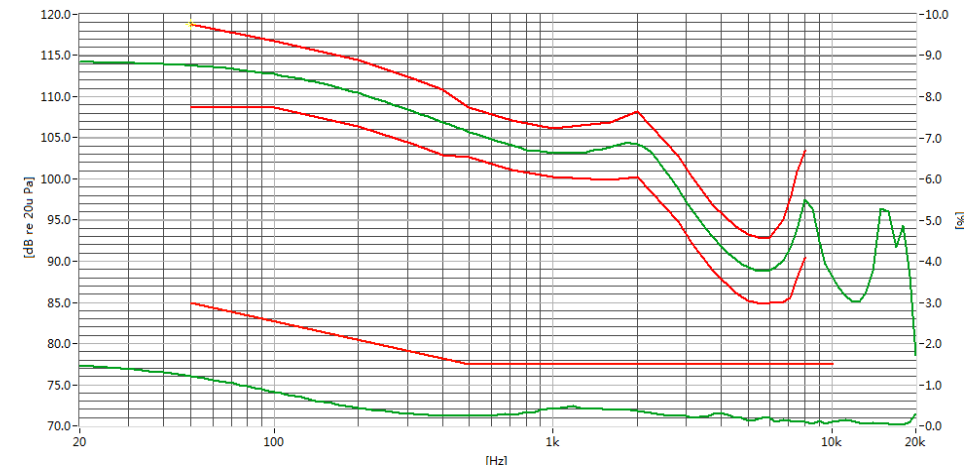
*For other termination options please contact sales@owolff.com or your local Ole Wolff representative.

PHYSICAL DIMENSIONS [mm]



including
soldering tin

GRAPHS



FR Mask

F. POINT	50	100	200	315	400	500	710	1000	1600	2000	2800	Hz
Upper limit	+5	+4	+4	+4	+4	+3	+3	+3	+4	+4	+4	dB
Lower limit	-5	-4	-4	-4	-4	-3	-3	-3	-4	-4	-4	dB

F. POINT	3150	3750	4500	5000	5600	6000	6700	7100	7500	8000	Hz
Upper limit	+4	+4	+4	+4	+4	+4	+5	+6	+7	+6	dB
Lower limit	-4	-4	-4	-4	-4	-4	-5	-6	-6	-7	dB

THD Mask

F. POINT	50	500	10000	Hz
Upper limit	3	1.5	1.5	%