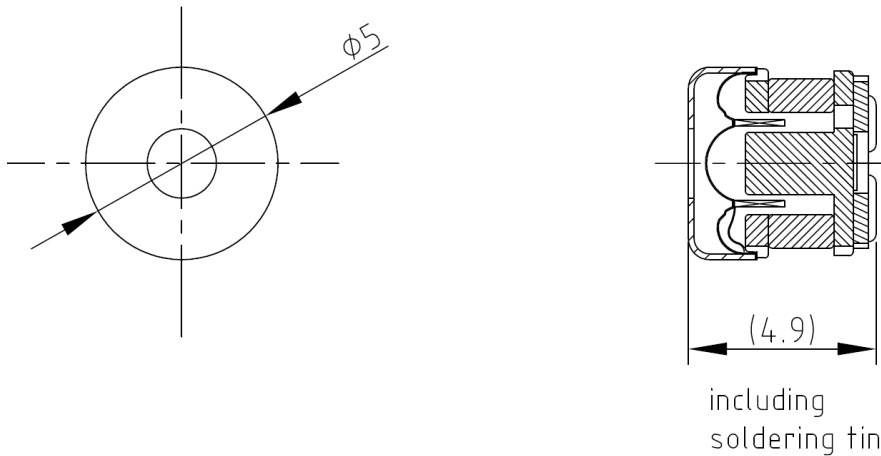


## CHARACTERISTICS

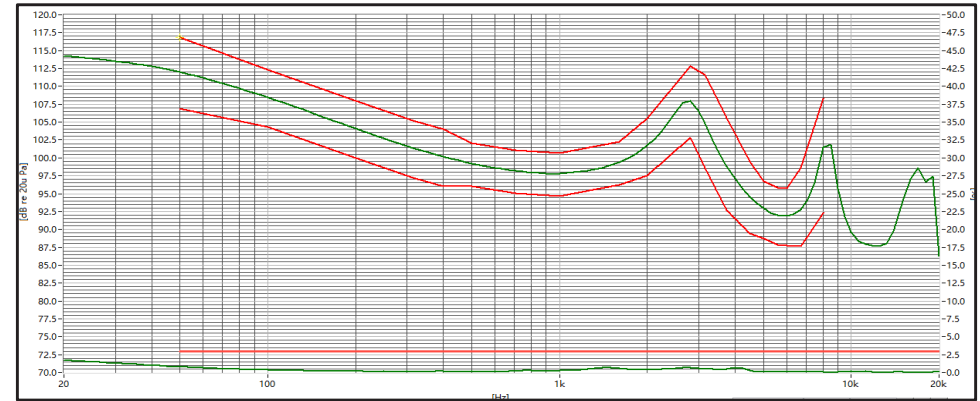
Impedance [ $\Omega$ ]	$38 \Omega \pm 15\%$ (@ 5kHz)
SPL [dB rel 20 $\mu$ Pa]	$97.5 \pm 3$ dB (@ 1kHz/1mW/2cc coupler)
Resonance Frequency [Hz]	$2800$ Hz $\pm 15\%$ (@1mW)
Total Harmonic Distortion [%]	As shown in graph
Input Power (nom./max) [mW]	5 / 10
Termination*	Terminals

\*For other termination options please contact sales@owolff.com or your local Ole Wolff representative.

## PHYSICAL DIMENSIONS [mm]



## GRAPHS



### FR Mask

F. POINT	50	100	200	315	400	500	710	1000	1600	2000	Hz
Upper limit	+5	+4	+4	+4	+4	+3	+3	+3	+3	+4	dB
Lower limit	-5	-4	-4	-4	-4	-3	-3	-3	-3	-4	dB

F. POINT	2800	3150	3750	4500	5000	5600	6000	6700	7100	8000	Hz
Upper limit	+5	+7	+7	+5	+4	+4	+4	+6	-	+7	dB
Lower limit	-5	-6	-6	-5	-4	-4	-4	-5	-5	-9	dB

### THD Mask

F. POINT	50	10000	Hz
Upper limit	3	3	%