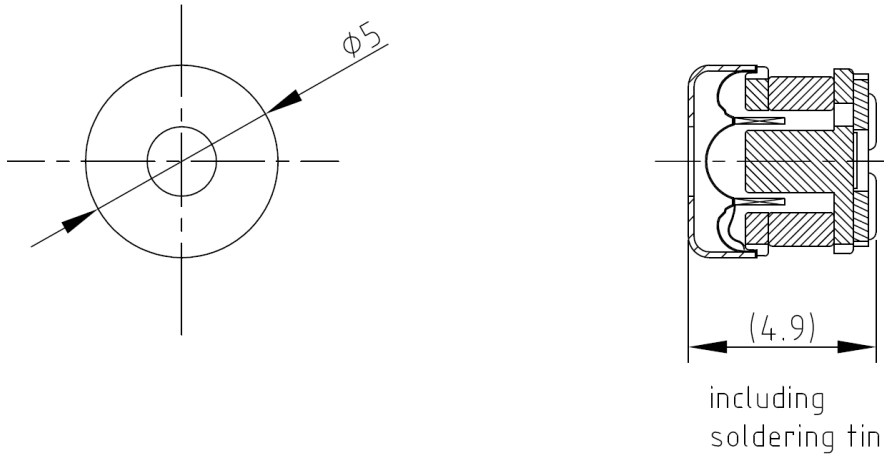


CHARACTERISTICS

Impedance [Ω]	16 Ω \pm 15% (@ 5kHz)
SPL [dB rel 20 μ Pa]	98 \pm 3 dB (@ 1kHz/1mW/2cc coupler)
Resonance Frequency [Hz]	3000 Hz \pm 15% (@1mW)
Total Harmonic Distortion [%]	As shown in graph
Input Power (nom./max) [mW]	5 / 10
Termination*	Terminals

*For other termination options please contact sales@owolff.com or your local Ole Wolff representative.

PHYSICAL DIMENSIONS [mm]



GRAPHS

