



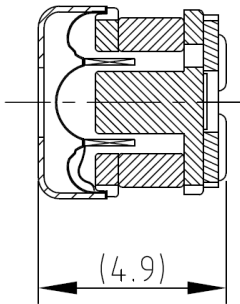
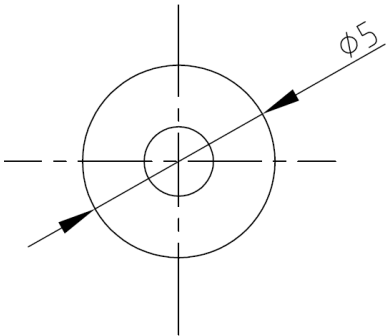
DYNAMIC RECEIVER  
OWR-05049T-100A

### CHARACTERISTICS

Impedance [ $\Omega$ ]	100 $\Omega$ $\pm$ 15% (@ 5kHz)
SPL [dB rel 20 $\mu$ Pa]	102.3 $\pm$ 3 dB @ 1kHz/1mW/2cc coupler
Resonance Frequency [Hz]	1800 Hz $\pm$ 15% (@1mW)
Total Harmonic Distortion [%]	As shown in graph
Input Power (nom./max) [mW]	5 / 10
Termination*	Terminals

\*For other termination options please contact sales@owolff.com or your local Ole Wolff representative.

### PHYSICAL DIMENSIONS [mm]



including soldering tin

### GRAPHS

