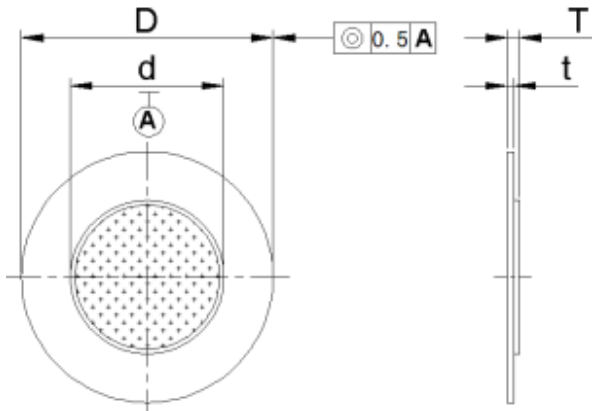


CHARACTERISTICS

Rated current [mA]	-
Max input voltage [V_{p-p}]	30
Sound Output [dB rel 20 μ Pa]*	-
Resonance Frequency [Hz]*	4000 \pm 500
Capacitance at 120 Hz [pF]	-

*Specified at rated voltage (resonant frequency, 1/2 duty, square wave).

PHYSICAL DIMENSIONS [mm]

ADDITIONAL INFO

Ceramic plate diameter (d) (mm)	$\Phi 15.0 \pm 0.3$
Metal plate diameter (D) (mm)	$\Phi 20.0 \pm 0.1$
Metal plate Thickness (t) (mm)	0.15 \pm 0.02
Total Thickness (T) (mm)	0.26 \pm 0.05